

ALL
BRITISH
COMPANY

COMPOSITE
ELECTROMAGNETIC
CLUTCHBRAKE

DATA
SHEET
MODEL
CB 175

- TORQUE 1.1 Nm. (10 lb.ins.) MAXIMUM
- UP TO $\frac{1}{8}$ H.P. AT 1440 R.P.M.
- CYCLE RATES CAN EXCEED 10,000 STARTS/STOPS PER HOUR WHERE LOAD INERTIA PERMITS
- FULLY SELF-ADJUSTING NO MAINTENANCE REQUIRED
- CHOICE OF SHAFT DIAMETERS $\frac{5}{16}$ " or 8mm.



The **Clark Composite Clutchbrake** unit is a combination assembly of the well proven Clark model 175 **Clutch and Brake**. Integral **input** and **output** shafts running in substantial sealed bearings reduce fitting to the ultimate in simplicity and low cost.

The Clutch and Brake torque may be fixed at maximum or preset to a reduced value. For exceptionally smooth starting, the Clark **Power Unit type 1024/2R** incorporates an inexpensive "**Silkstart**" electronic control which raises the **clutch** voltage from zero to 24V over a period which can be preset between $\frac{1}{4}$ second and 10 seconds. "**Boost**" circuits can provide very high acceleration and stopping rates i.e. for high cycle rate indexing drives.

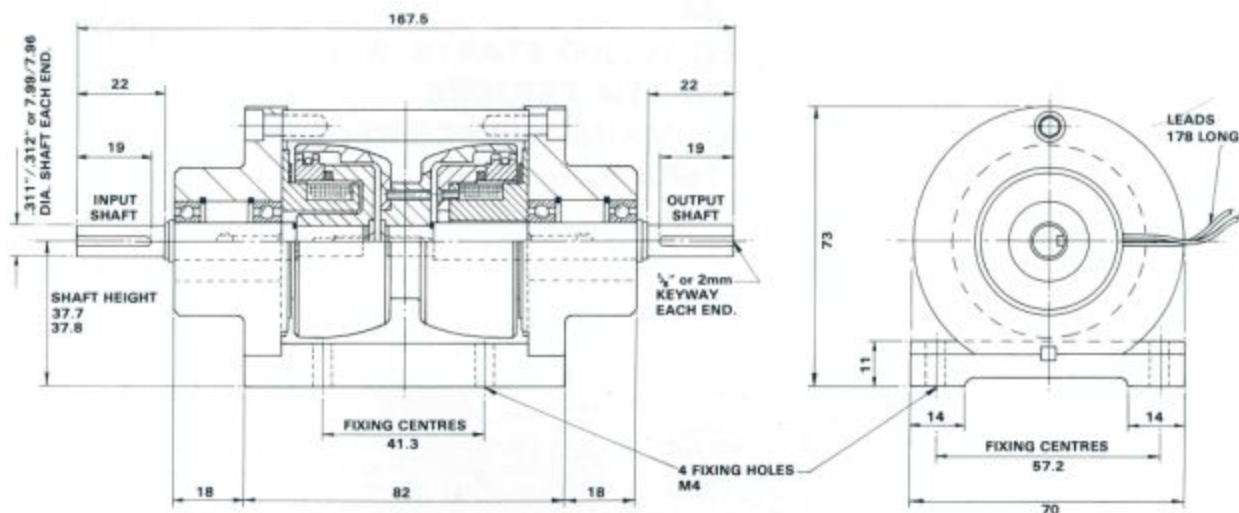
Comprehensive applications advice from address overleaf.

DATA
SHEET

MODEL
CB 175

COMPOSITE
ELECTROMAGNETIC
CLUTCHBRAKE

ALL
BRITISH
COMPANY



General Specification

Maximum Static Torque	:	1.1 Nm (10 lb. ins.).
Maximum Speed	:	8,000 r.p.m.
Standard Coil Windings	:	24 volts D.C. 0.25 Amp. 97 Ohms. Continuously rated.
Other Voltages available	:	6, 12, 50, 90 Volts D.C.
Weight	:	0.9 Kg (2 lb)

Maximum Heat
Dissipation (Slipping)

Input Speed	0-500 r.p.m.	:	870 Nm/min (640 ft.lb/min)
	1000 r.p.m.	:	1333 Nm/min (980 ft.lb/min)
	1500 r.p.m.	:	1500 Nm/min (1100 ft.lb/min)
	3000 r.p.m.	:	1800 Nm/min (1325 ft.lb/min)



CLARK ELECTRIC CLUTCH AND CONTROLS Ltd

28 Victory Park, Trident Close, Medway City Estate, Rochester, Kent, ME2 4ER

Tel.: +44 (0)1634 297408 Fax.: +44 (0)1634 739136 e-mail: sales@clarkelectric.co.uk

ALL
BRITISH
COMPANY

**COMPOSITE
ELECTROMAGNETIC
CLUTCHBRAKE**

**DATA
SHEET
MODEL
CB 250**

- **TORQUE 5.6 Nm. (50lb.ins.) MAXIMUM.**
- **UP TO 1/2 H.P. AT 1440 R.P.M.**
- **CYCLE RATES CAN EXCEED 10,000 STARTS/STOPS PER HOUR WHERE LOAD INERTIA PERMITS.**
- **FULLY SELF-ADJUSTING NO MAINTENANCE REQUIRED.**
- **CHOICE OF SHAFT DIAMETERS 1/2" or 12mm.**



The **Clark Composite Clutchbrake** unit is a combination assembly of the well proven **Clark** model 250 **Clutch and Brake**. Integral **input** and **output** shafts running in substantial sealed bearings reduce fitting to the ultimate in simplicity and low cost. The unit requires **no maintenance** and is entirely **self-adjusting**.

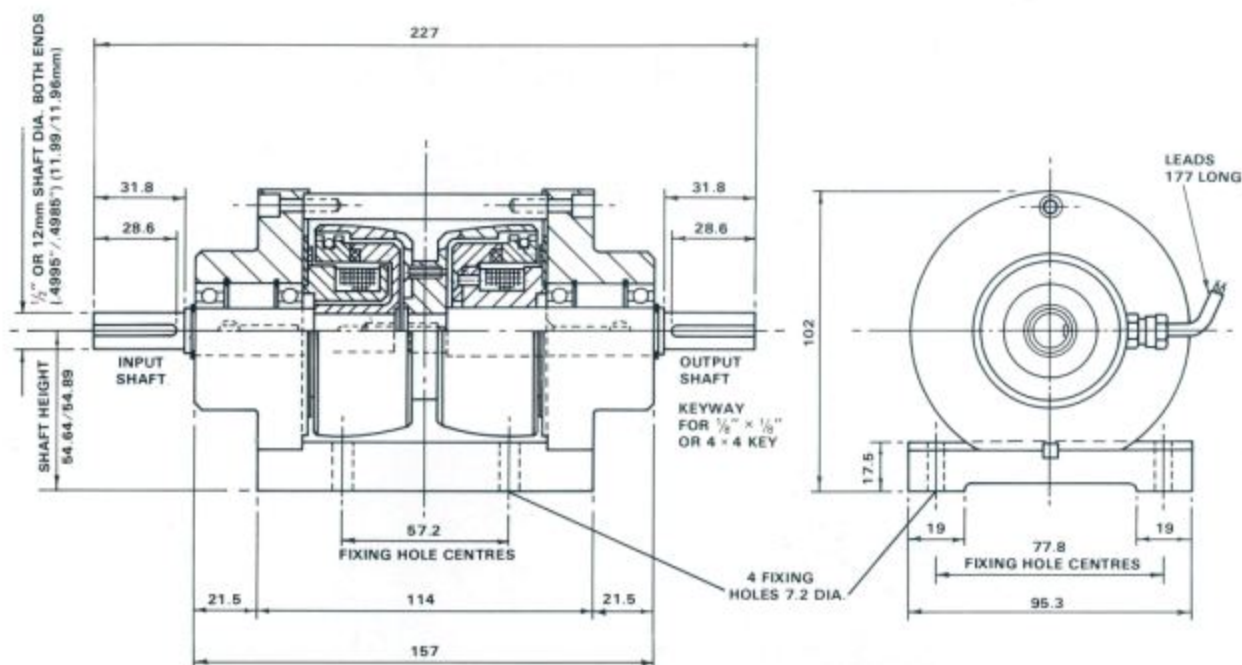
The Clutch and Brake torque may be fixed at maximum or preset to a reduced value. For exceptionally smooth starting, the **Clark Power Unit type 42SR** incorporates an inexpensive "**Silkstart**" electronic control which raises the **clutch** voltage from zero to 24V over a period which can be preset at between 1/4 second and 10 seconds. "**Boost**" circuits can provide very high acceleration and stopping rates i.e. for high cycle rate indexing drives.

Comprehensive applications advice from address overleaf.

**DATA
SHEET
MODEL
CB 250**

**COMPOSITE
ELECTROMAGNETIC
CLUTCHBRAKE**

ALL
BRITISH
COMPANY



General Specification

Maximum Static Torque : 5.6 Nm (50lb. ins.).
 Maximum Speed : 8,000 r.p.m.
 Standard Coil Windings : 24 Volts D.C. 0.38 Amp.
 64 Ohms. Continuously rated.
 Other Voltages available : 6, 12, 50, 90 Volts D.C.
 Weight : 2.72 Kg. (6lb)
 Maximum Heat
 Dissipation (Slipping)

Input Speed 0-500 r.p.m. : 1320 Nm/min (970 ft.lb/min)
 1000 r.p.m. : 2000 Nm/min (1475 ft.lb/min)
 1500 r.p.m. : 2450 Nm/min (1805 ft.lb/min)
 3000 r.p.m. : 3070 Nm/min (2260 ft.lb/min)



CLARK ELECTRIC CLUTCH AND CONTROLS Ltd

28 Victory Park, Trident Close, Medway City Estate, Rochester, Kent, ME2 4ER
 Tel.: +44 (0)1634 297408 Fax.: +44 (0)1634 739136 e-mail: sales@clarkelectric.co.uk

ALL
BRITISH
COMPANY

COMPOSITE
ELECTROMAGNETIC
CLUTCHBRAKE

DATA
SHEET
MODEL
CB 365

- TORQUE 11.5 Nm. (100lb.ins.) MAXIMUM.
- UP TO 1 H.P. AT 1440 R.P.M.
- CYCLE RATES CAN EXCEED 6,000 STARTS/STOPS PER HOUR WHERE LOAD INERTIA PERMITS.
- FULLY SELF-ADJUSTING NO MAINTENANCE REQUIRED.
- 20mm DIAMETER INPUT AND OUTPUT SHAFTS.



The **Clark Composite Clutchbrake** unit is a combination assembly of the well proven **Clark model 365 Clutch and Brake**. Integral **input** and **output** shafts running in substantial sealed bearings reduce fitting to the ultimate in simplicity and low cost. The unit requires **no maintenance** and is entirely **self-adjusting**.

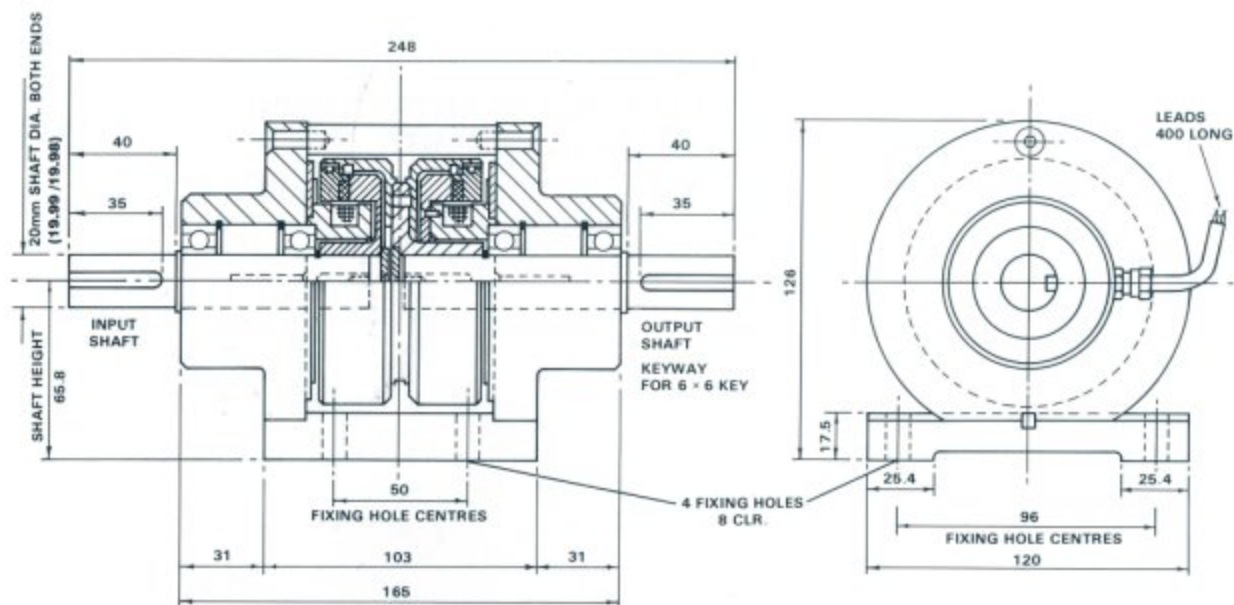
The Clutch and Brake torque may be fixed at maximum or preset to a reduced value. For exceptionally smooth starting, the **Clark Power Unit type 1024/2R** incorporates an inexpensive "**Silkstart**" electronic control which raises the **clutch** voltage from zero to 24V over a period which can be preset at between $\frac{1}{4}$ second and 10 seconds. "**Boost**" circuits can provide very high acceleration and stopping rates i.e. for high cycle rate indexing drives.

Comprehensive applications advice from address overleaf.

**DATA
SHEET
MODEL
CB 365**

**COMPOSITE
ELECTROMAGNETIC
CLUTCHBRAKE**

**ALL
BRITISH
COMPANY**



General Specification

Maximum Static Torque	:	11.5 Nm (100lb. ins.).
Maximum Speed	:	6250 r.p.m.
Standard Coil Windings	:	24 Volts D.C. 0.63 Amp. 38 Ohms. Continuously rated.
Other Voltages available	:	6, 12, 50, 90 Volts D.C.
Weight	:	4.75 Kg. (10.5lb)
Maximum Heat Dissipation (Slipping)	:	
Input Speed 0-500 r.p.m.	:	1707 Nm/min (1255 ft.lb/min)
1000 r.p.m.	:	2560 Nm/min (1880 ft.lb/min)
1500 r.p.m.	:	3123 Nm/min (2296 ft.lb/min)
3000 r.p.m.	:	4060 Nm/min (2985 ft.lb/min)



CLARK ELECTRIC CLUTCH AND CONTROLS Ltd

28 Victory Park, Trident Close, Medway City Estate, Rochester, Kent, ME2 4ER
Tel.: +44 (0)1634 297408 Fax.: +44 (0)1634 739136 e-mail: sales@clarkelectric.co.uk

ALL
BRITISH
COMPANY

COMPOSITE
ELECTROMAGNETIC
CLUTCHBRAKE

DATA
SHEET
MODEL
CB 400

- TORQUE 23 Nm. (200lb.ins.) MAXIMUM.
- UP TO 2 H.P. AT 1440 R.P.M.
- CYCLE RATES CAN EXCEED 3,600 STARTS/STOPS PER HOUR WHERE LOAD INERTIA PERMITS.
- FULLY SELF-ADJUSTING NO MAINTENANCE REQUIRED.
- CHOICE OF SHAFT DIAMETER $\frac{3}{4}$ " OR 20mm.



The **Clark Composite Clutchbrake** unit is a combination assembly of the well proven **Clark** model 400 **Clutch and Brake**. Integral **input** and **output** shafts running in substantial sealed bearings reduce fitting to the ultimate in simplicity and low cost.

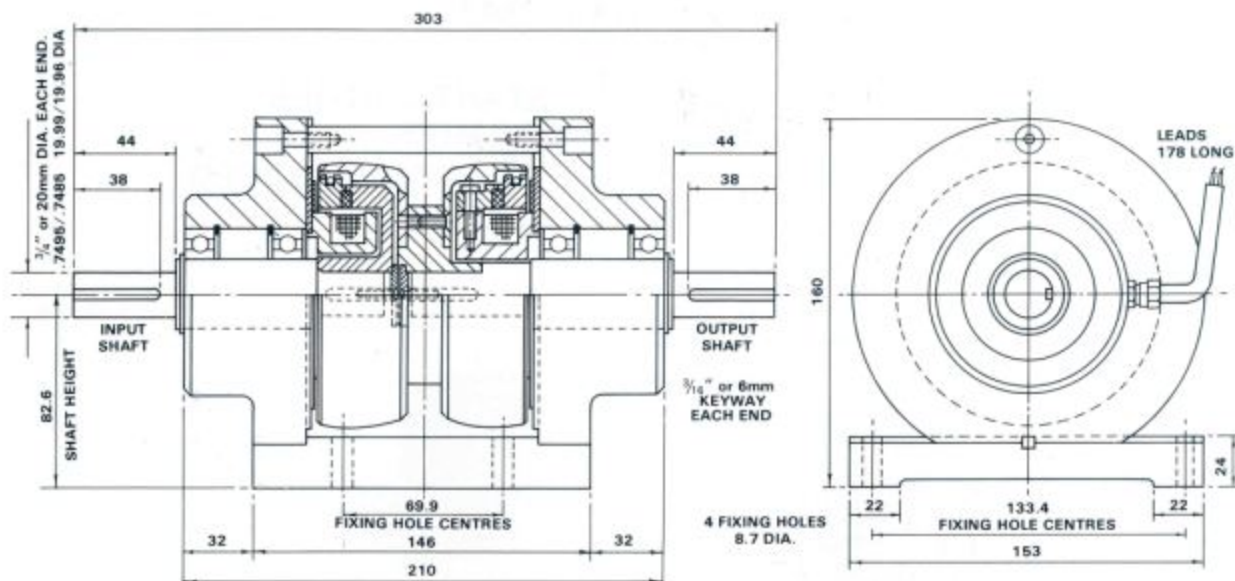
The Clutch and Brake torque may be fixed at maximum or preset to a reduced value. For exceptionally smooth starting, the **Clark Power Unit type 1024/2R** incorporates an inexpensive "**Silkstart**" electronic control which raises the **clutch** voltage from zero to 24V over a period which can be preset at between $\frac{1}{4}$ second and 10 seconds. "**Boost**" circuits can provide very high acceleration and stopping rates i.e. for high cycle rate indexing drives.

Comprehensive applications advice from address overleaf.

**DATA
SHEET
MODEL
CB 400**

**COMPOSITE
ELECTROMAGNETIC
CLUTCHBRAKE**

ALL
BRITISH
COMPANY



General Specification

Maximum Static Torque : 23 Nm (200lb. ins.).
Maximum Speed : 6,250 r.p.m.
Standard Coil Windings : 24 Volts D.C. 0.7 Amp.
34 Ohms. Continuously rated.
Other Voltages available : 6, 12, 50, 90 Volts D.C.
Weight : 10.5 Kg. (23lb)
Maximum Heat
Dissipation (Slipping)

Input Speed 0-500 r.p.m. : 2788 Nm/min (2050 ft.lb/min)
1000 r.p.m. : 4250 Nm/min (3125 ft.lb/min)
1500 r.p.m. : 5508 Nm/min (4050 ft.lb/min)
3000 r.p.m. : 7923 Nm/min (5826 ft.lb/min)



CLARK ELECTRIC CLUTCH AND CONTROLS Ltd

28 Victory Park, Trident Close, Medway City Estate, Rochester, Kent, ME2 4ER

Tel.: +44 (0)1634 297408 Fax.: +44 (0)1634 739136 e-mail: sales@clarkelectric.co.uk

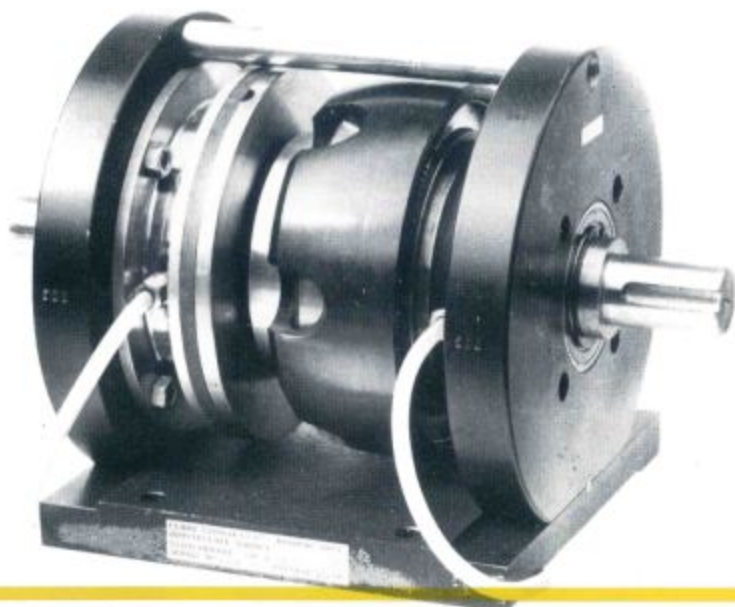
ALL
BRITISH
COMPANY

**COMPOSITE
ELECTROMAGNETIC
CLUTCHBRAKE**

**DATA
SHEET
MODEL
CB 600**

This Clutchbrake unit should be used with a Clark Power Unit type 6824/2 or 6824/2R or equivalent circuit.

- **TORQUE 61 Nm. 45lb.ft. MAXIMUM**
- **UP TO 5 H.P. AT 1440 R.P.M.**
- **CYCLE RATES CAN EXCEED 2000 STARTS/STOPS PER HOUR WHERE LOAD INERTIA PERMITS**
- **FULLY SELF-ADJUSTING NO MAINTENANCE REQUIRED**
- **CHOICE OF SHAFT DIAMETERS 1" or 28mm.**



The **Clark Composite Clutchbrake** unit is a combination assembly of the well proven **Clark model 600 Clutch and Brake**. Integral **input** and **output** shafts running in substantial sealed bearings reduce fitting to the ultimate in simplicity and low cost.

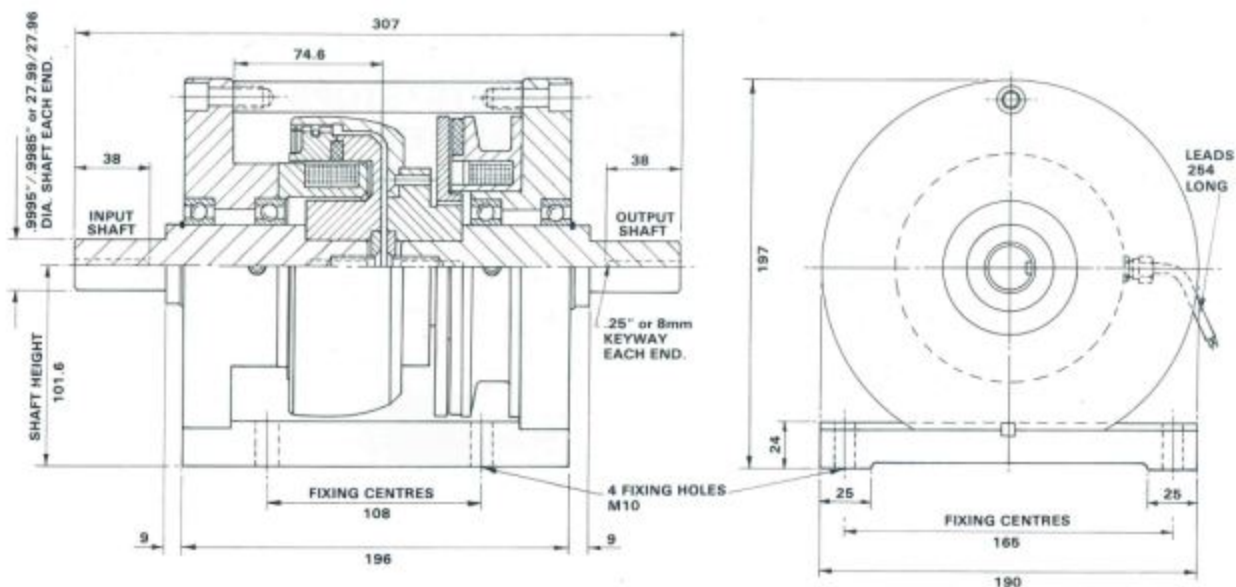
The Clutch and Brake torque may be fixed at maximum or preset to a reduced value. For exceptionally smooth starting, the **Clark Power Unit type 6824/2R** incorporates an inexpensive "**Silkstart**" electronic control which raises the **clutch** voltage from zero to 24V over a period which can be preset between $\frac{1}{4}$ second and 10 seconds. "**Boost**" circuits can provide very high acceleration and stopping rates i.e. for high cycle rate indexing drives.

Comprehensive applications advice from address overleaf.

**DATA
SHEET
MODEL
CB 600**

**COMPOSITE
ELECTROMAGNETIC
CLUTCHBRAKE**

**ALL
BRITISH
COMPANY**



General Specification

Maximum Static Torque : 61 Nm (45lb. ft.)
Maximum Speed : 3,000 r.p.m.
Standard Coil Windings : 24 volts D.C. 0.92 Amp.
26 Ohms. Continuously rated.
Other Voltages available : 6, 12, 50, 90 Volts D.C.
Weight : 18.1 Kg (40lb)
Maximum Heat
Dissipation (Slipping)

Input Speed 0-500 r.p.m. : 11,800 Nm/min (8,700 ft.lb./min)
1000 r.p.m. : 18,300 Nm/min (13,450 ft.lb./min)
1500 r.p.m. : 23,700 Nm/min (17,400 ft.lb./min)
3000 r.p.m. : 39,400 Nm/min (29,000 ft.lb./min)



CLARK ELECTRIC CLUTCH AND CONTROLS Ltd

28 Victory Park, Trident Close, Medway City Estate, Rochester, Kent, ME2 4ER
Tel.: +44 (0)1634 297408 Fax.: +44 (0)1634 739136 e-mail: sales@clarkelectric.co.uk

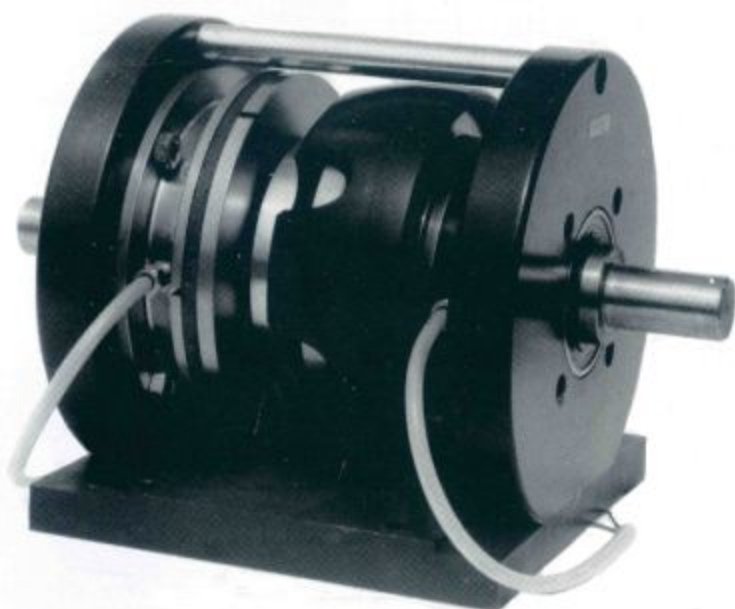
ALL
BRITISH
COMPANY

**COMPOSITE
ELECTROMAGNETIC
CLUTCHBRAKE**

**DATA
SHEET
MODEL
CB 800**

This Clutchbrake unit should be used with a Clark Power Unit type 6824/2 or 6824/2R or equivalent circuit.

- **TORQUE 122 Nm. 90lb.ft. MAXIMUM**
- **UP TO 12 H.P. AT 1440 R.P.M.**
- **CYCLE RATES CAN EXCEED 1500 STARTS/STOPS PER HOUR WHERE LOAD INERTIA PERMITS**
- **FULLY SELF-ADJUSTING NO MAINTENANCE REQUIRED**
- **CHOISE OF SHAFT DIAMETERS 1⁵/₈" or 40 mm**



The **Clark Composite Clutchbrake** unit is a combination assembly of the well proven **Clark model 800 Clutch and Brake**. Integral **input** and **output** shafts running in substantial sealed bearings reduce fitting to the ultimate in simplicity and low cost.

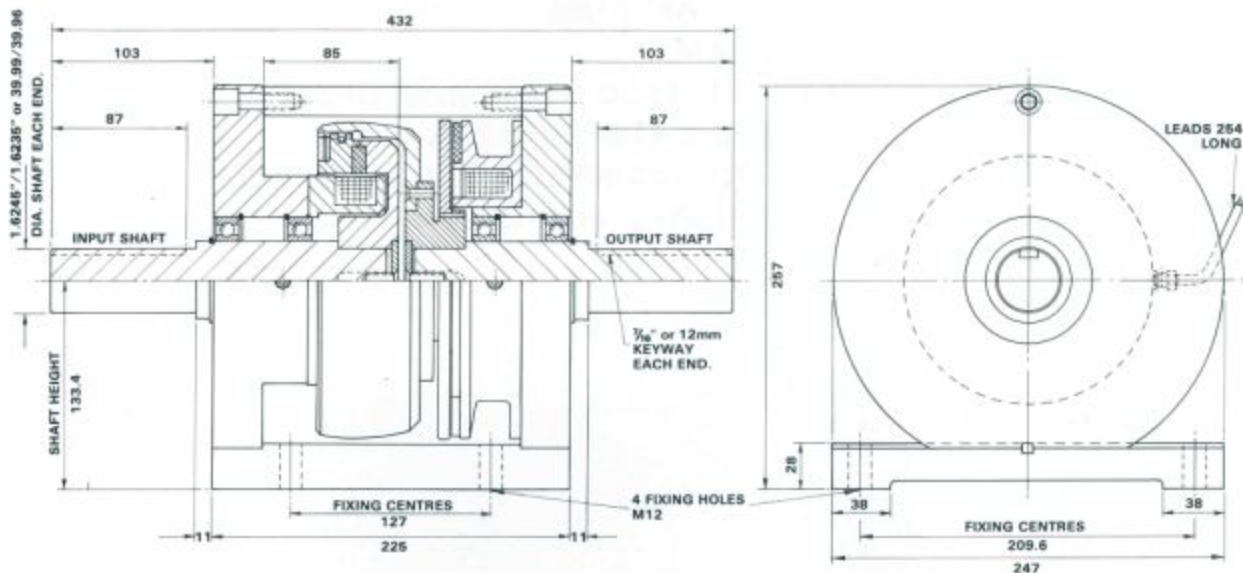
The Clutch and Brake torque may be fixed at maximum or preset to a reduced value. For exceptionally smooth starting, the **Clark Power Unit type 6824/2R** incorporates an inexpensive "**Silkstart**" electronic control which raises the **clutch** voltage from zero to 24V over a period which can be preset between 1/4 second and 10 seconds. "**Boost**" circuits can provide very high acceleration and stopping rates i.e. for high cycle rate indexing drives.

Comprehensive applications advice from address overleaf.

DATA SHEET
MODEL CB 800

COMPOSITE ELECTROMAGNETIC CLUTCHBRAKE

ALL BRITISH COMPANY



General Specification

Maximum Static Torque	:	122 Nm (90lb. ft).
Maximum Speed	:	3,000 r.p.m.
Standard Coil Windings	:	24 volts D.C. 1.4 Amp. 17.2 Ohms. Continuously rated.
Other Voltages available	:	6, 12, 50, 90 Volts D.C.
Weight	:	33.5 Kg (74lb)
Maximum Heat Dissipation (Slipping)	:	
Input Speed	0-500 r.p.m. :	20,000 Nm/min (14,700 ft.lb/min)
	1000 r.p.m. :	30,600 Nm/min (22,500 ft.lb/min)
	1500 r.p.m. :	41,100 Nm/min (30,200 ft.lb/min)
	3000 r.p.m. :	71,700 Nm/min (52,700 ft.lb/min)



CLARK ELECTRIC CLUTCH AND CONTROLS Ltd

28 Victory Park, Trident Close, Medway City Estate, Rochester, Kent, ME2 4ER
Tel.: +44 (0)1634 297408 Fax.: +44 (0)1634 739136 e-mail: sales@clarkelectric.co.uk