

ALL
BRITISH
COMPANY

EXTENDED-HUB ELECTROMAGNETIC CLUTCHES

FOR PULLEY, CHAINWHEEL,
SPUR GEAR OR FLEXIBLE COUPLING

DATA
SHEET
SIZE
S400EH

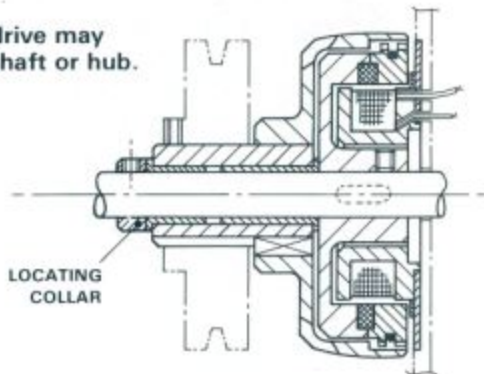
MAXIMUM STATIC TORQUE 23 Nm. 16 lb. ft.

EXTENDED HUB CLUTCHES

Advantages

- Ideal for use where an input or output drive is required to a shaft emerging from a machine side frame or casting.
- Rugged construction for long life.
- Simple to fit - fitted with self-positioning flange bearings.
- Offers a facility for use with a pulley or with a flexible coupling for in-line drive.

Input drive may
be to shaft or hub.



SELECTION TABLE

Allowing for 250% torque overloads after Clutch has brought load to full speed.

Motor kW	SHAFT SPEED AT CLUTCH IN R.P.M.																	
	100	200	300	400	500	600	700	800	900	1000	1250	1440	1750	2000	2500	2800	3000	4000
0.015	250	250	250	175	175	175	175	175	175	175	175	175	175	175	175	175	175	175
0.037	365	250	250	250	250	250	250	175	175	175	175	175	175	175	175	175	175	175
0.06	400	365	250	250	250	250	250	250	250	250	250	175	175	175	175	175	175	175
0.09	400	400	365	250	250	250	250	250	250	250	250	250	250	175	175	175	175	175
0.12	600	400	365	365	365	250	250	250	250	250	250	250	250	250	250	175	175	175
0.18	600	400	400	400	365	365	365	250	250	250	250	250	250	250	250	250	250	175
0.25	600	600	400	400	400	365	365	365	365	365	250	250	250	250	250	250	250	250
0.37	800	600	600	400	400	400	400	400	365	365	365	365	250	250	250	250	250	250
0.55	800	800	600	600	600	400	400	400	400	400	365	365	365	365	250	250	250	250
0.75		800	600	600	600	600	600	400	400	400	400	400	365	365	365	365	365	250
1.1		800	800	600	600	600	600	600	600	600	400	400	400	400	365	365	365	365
1.5			800	800	800	600	600	600	600	600	600	600	400	400	400	400	400	365
2.2				800	800	800	800	600	600	600	600	600	600	600	400	400	400	400
3.0							800	800	800	800	800	600	600	600	600	600	600	400
5.5											800	800	800	800	600	600	600	600
7.5												800	800	800	800	600	600	600
9.3													800	800	800	800	800	600
11.0														800	800	800	800	800

See S400 Clutch Data Sheet for full specification. Consult S400 installation Data Sheet for details of Field Spool Mounting.

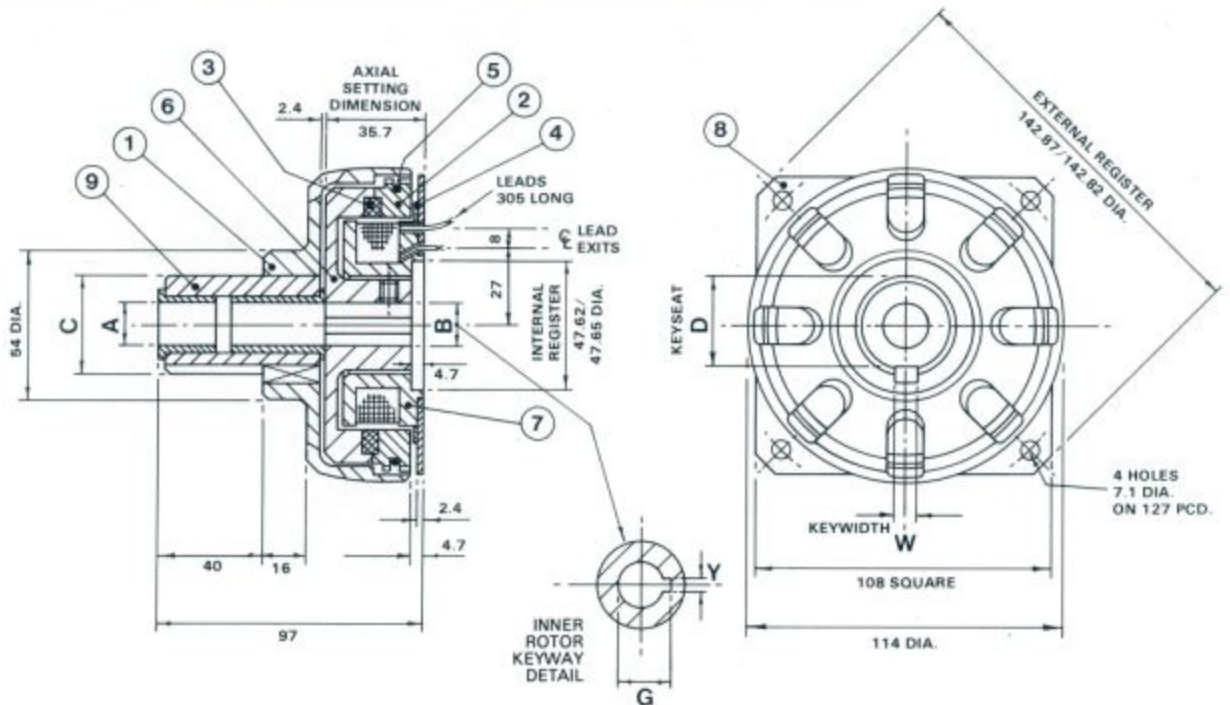
DATA SHEET
SIZE S400EH

EXTENDED-HUB ELECTROMAGNETIC CLUTCHES
FOR PULLEY, CHAINWHEEL, SPUR GEAR OR FLEXIBLE COUPLING

ALL BRITISH COMPANY

Type S400EH

(Used where the Field Spool assembly can be attached to an existing support)



STANDARD BORES, HUB DIAMETERS & KEYWAYS

BEARING BORE A DIA.	B DIA.	INNER ROTOR KEYWAY		HUB DIA. C	HUB KEYWAY	
		Y	G		W	D
1/2"	.500"/.501"	.125"/.126"	.561"/.567"	1.3750"/1.3747"	.374"/.375"	1.223"/1.218"
3/8"	.625"/.626"	.188"/.189"	.714"/.720"			
3/4"	.750"/.751"	.188"/.189"	.838"/.844"			

METRIC SIZES (mm)

BEARING BORE A DIA.	B DIA.	INNER ROTOR KEYWAY		HUB DIA. C	HUB KEYWAY	
		Y	G		W	D
12	12.00/12.03	4.00/4.02	13.83/13.93			
14	14.00/14.03		16.33/16.43			
15	15.00/15.03	5.00/5.02	17.33/17.43	35.000/ 34.992	10.000/ 9.964	31.50/ 31.40
16	16.00/16.03		18.33/18.43			
19	19.00/19.03	6.00/6.02	21.83/21.93			
20	20.00/20.03		22.83/22.93			

PARTS LIST

ITEM	PART No.	TITLE
1	3163	EH OUTER MEMBER
2	4073	DRIVE RING
3	4086	FRICTION LINING
4	565	MAGNETIC INSULATOR
5	733	CUSHION RING
6	527	INNER ROTOR
7	530	FIELD SPOOL
8	531	MOUNTING PLATE
9	4135	EH SLEEVE & BEARING SUB-ASSY.

CLARK ELECTRIC CLUTCH AND CONTROLS Ltd

28 Victory Park, Trident Close, Medway City Estate, Rochester, Kent, ME2 4ER
Tel.: +44 (0)1634 297408 Fax.: +44 (0)1634 739136 e-mail: sales@clarkelectric.co.uk