

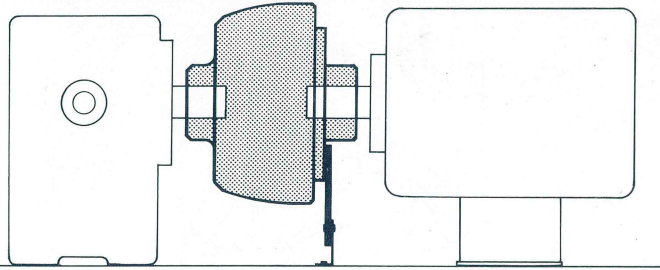
ALL  
BRITISH  
COMPANY

# SELF-ADJUSTING ELECTROMAGNETIC CLUTCHES TYPE BM

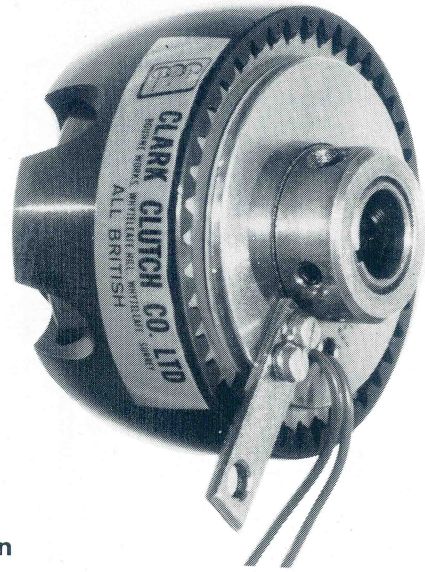
DATA  
SHEET  
SIZE  
**BM175**

WITH BEARING MOUNTED STATIONARY FIELD

MAXIMUM STATIC TORQUE 1.1 N.m. 10lb.ins.



Two part assembly : Input may be from either end.



## Clutch H.P. rating

R.P.M. at Clutch Shaft	Allowing for shock torque loads up to 250% of steady load occurring.	
	When load is up to speed	During the accelerating period
	H.P.	H.P.
100	0.0064	0.0057
200	0.0128	0.0112
300	0.0192	0.0156
400	0.0256	0.0191
500	0.0320	0.0226
600	0.0384	0.0264
700	0.0448	0.0293
800	0.0512	0.0311
900	0.0576	0.0343
1000	0.064	0.0382
1250	0.080	0.0474
1440	0.092	0.055
2000	0.128	0.0762
2500	0.160	0.0952

## General Specification

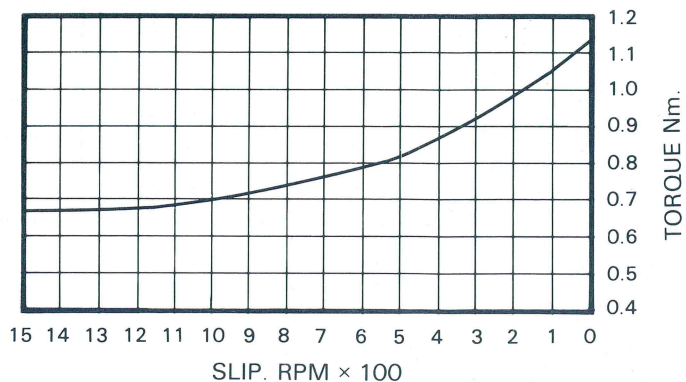
Maximum Static Torque : 1.1 N.m. (10lb.ins.)  
 Standard Voltage : 24 Volts D.C.  
 Rated Continuous Current : 0.25 amp.  
 Resistance (20°C) : 97 Ohms  
 Other Voltages Available : 6, 12, 50, 90 Volts D.C.  
 Maximum Speed : 5,000 R.P.M.  
 Maximum Heat  
 Dissipation (Slipping)

At various R.P.M. 500 r.p.m.: 870 Nm/min (640 ft.lb/min)  
 1000 r.p.m.: 1333 Nm/min (980 ft.lb/min)  
 1500 r.p.m.: 1500 Nm/min (1100 ft.lb/min)  
 3000 r.p.m.: 1800 Nm/min (1325 ft.lb/min)

Weight : 0.23kg (8 oz)

## Torque: Slip characteristic

i.e. Gives torque at moment of engagement  
and as load is accelerated.



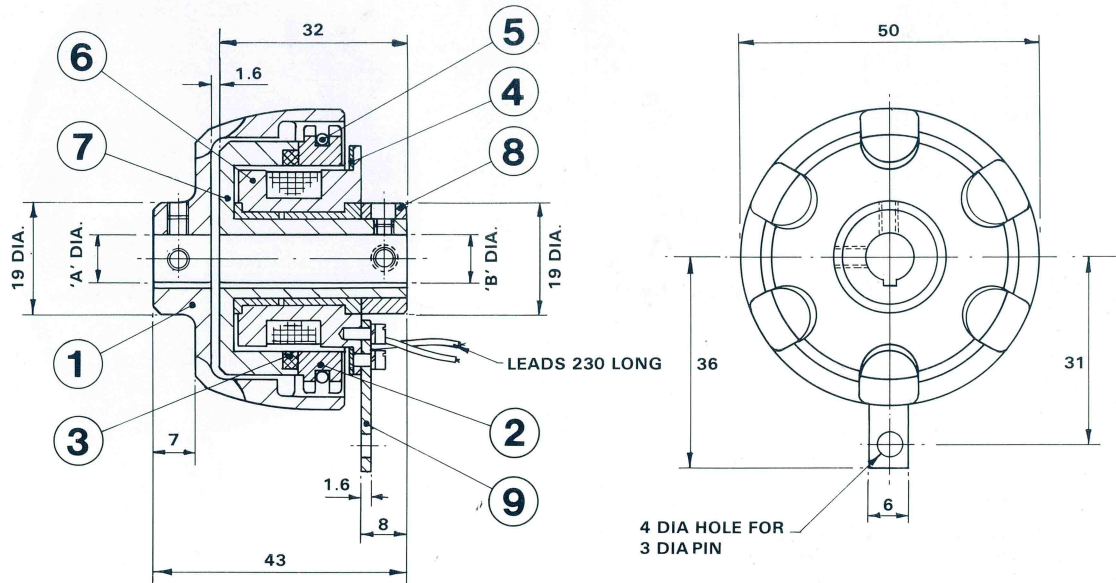
**DATA SHEET**  
**SIZE BM175**

**SELF-ADJUSTING ELECTROMAGNETIC CLUTCHES TYPE BM**

**ALL BRITISH COMPANY**

**WITH BEARING MOUNTED STATIONARY FIELD**

This Clutch is used as a clutch-coupling between two in-line shafts which should be rigidly supported on a good alignment as detailed on the Installation & Maintenance sheet at front of catalogue.



**Note :** Torque arm to be fastened only to relieve coil leads from light bearing drag. Do not tighten so as to load the bearing unnecessarily.

**STANDARD BORES**

**PARTS LIST**

ITEM	PART No.	TITLE	No. OFF
1	540	OUTER MEMBER	1
2	543	DRIVE RING	1
3	552	FRICITION RING	1
4	4854	MAGNETIC INSULATOR	1
5	735	CUSHION RING	1
6	3954	BM. FIELD SPOOL ASSY	1
7	2065	BM. INNER ROTOR	1
8	2066	COLLAR	1
9	2067	TORQUE ARM	1

'A' INCHES	'B' INCHES	KEYWAY WIDTH INCHES
.1885/.1875	.1885/.1875	-
.251/.250	.251/.250	-
.3135/.3125	.3135/.3125	1/8"
.376/.375	.376/.375	1/8"
.4385/.4375	-	1/8"
-0 mm +.03	-0 mm +.03	mm
6	6	-
8	8	2
9	9	3
10	-	3

**CLARK ELECTRIC CLUTCH AND CONTROLS Ltd**

28 Victory Park, Trident Close, Medway City Estate, Rochester, Kent, ME2 4ER  
Tel.: +44 (0)1634 297408 Fax.: +44 (0)1634 739136 e-mail: sales@clarkelectric.co.uk