

ALL
BRITISH
COMPANY

EXTENDED-HUB ELECTROMAGNETIC CLUTCHES

FOR PULLEY, CHAINWHEEL,
SPUR GEAR OR FLEXIBLE COUPLING

DATA
SHEET
SIZE
BM250EH

MAXIMUM STATIC TORQUE 5.6 Nm. (50 lb. ins.)

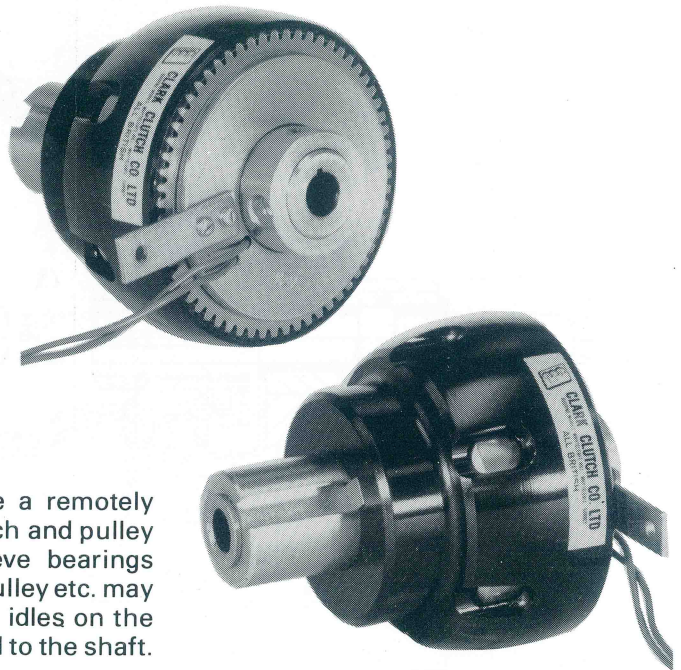
Will transmit available torque of .25 Kw motor at 1440 r.p.m. with 2.5 times overload factor.

EXTENDED HUB CLUTCHES

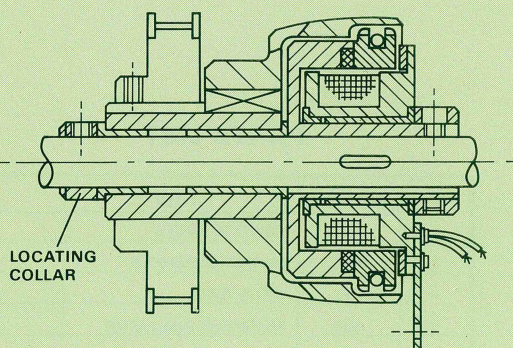
Advantages

- Simple to fit-slide onto shaft, fit key and lock collars.
- Through shaft mounting avoids need to align shafts.
- Clark Clutches are self-adjusting throughout their life.
- Will operate up to 60 times a minute where load inertia permits.
- Softstart facility available where used with Clark Silkstart Acceleration Controller.
- Lower power device .38 amp at 24 volt.

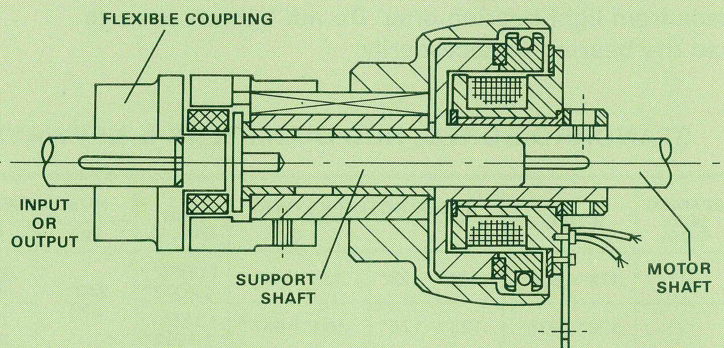
Extended Hub Clutches are designed for use where a remotely controlled drive is required to or from a shaft via a clutch and pulley etc. The Clutches are fitted with oil reservoir sleeve bearings contained within the steel keywayed hub to which the pulley etc. may be secured. When the Clutch is switched off, the hub idles on the shaft. When the Clutch is switched on, the hub is locked to the shaft.



Typical use of BM250EH Clutch :



(a) clutch mounted on through shaft with pulley fitted to hub.



(b) with a flexible coupling fitted for an in-line coupling between two shafts where precise shaft alignment cannot be guaranteed.

See BM250 Clutch Data Sheet for full specification.

Bedding In

Where it is known that the Clutch and Brake are to be used on low speed applications, the unit may be supplied bedded-in in order that full torque will be available after a few operations.

On fast speed applications, the units will develop full torque after a few operations.

DATA SHEET

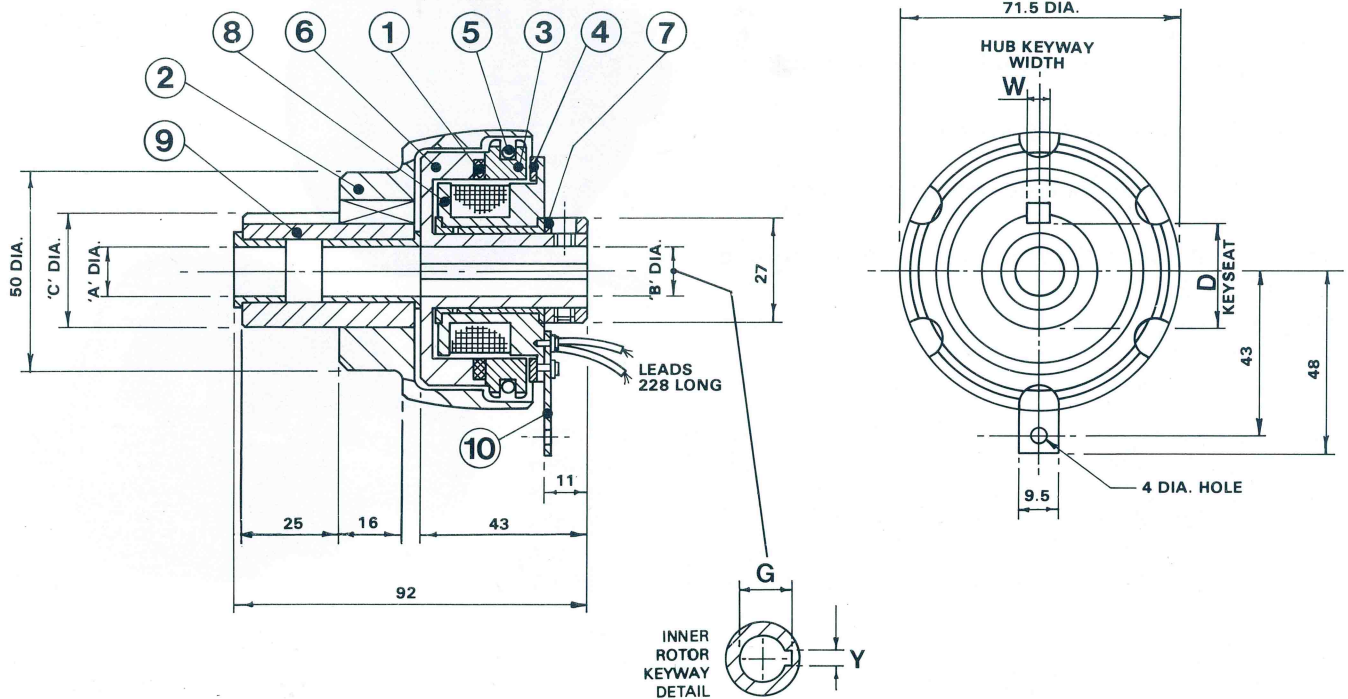
SIZE
BM250EH

EXTENDED-HUB ELECTROMAGNETIC CLUTCHES

FOR PULLEY, CHAINWHEEL,
SPUR GEAR OR FLEXIBLE COUPLING

ALL
BRITISH
COMPANY

Type BM250EH



Note : Torque arm to be fastened only to relieve coil leads from light bearing drag. Do not tighten so as to load the bearing unnecessarily.

STANDARD BORES, HUB DIAMETERS & KEYWAYS

BEARING BORE A DIA.	B DIA.	INNER ROTOR KEYWAY		HUB DIA. C	HUB KEYWAY	
		Y	G		W	D
3/8"	.375"/.376"	.125"/.126"	.435"/.441"	1.0005"/ 1.0002"	.249"/ .250"	.858"/ .852"
1/2"	.500"/.501"	.125"/.126"	.561"/.567"	1.1255"/ 1.1252"		.983"/ .977"

METRIC SIZES (mm)

BEARING BORE A DIA.	B DIA.	INNER ROTOR KEYWAY		HUB DIA. C	HUB KEYWAY	
		Y	G		W	D
8	8.00/8.03	1.99/2.00	9.03/9.13	25.00/ 24.99	4.00/ 3.97	22.50/ 22.40
9	9.00/9.03	3.00/3.02	10.43/10.53			25.50/ 25.40
10	10.00/10.03	3.00/3.02	11.43/11.53	28.00/ 27.99		
12	12.00/12.03	4.00/4.02	13.83/13.93			
14	14.00/14.03	5.00/5.02	14.9/15.00			

PARTS LIST

ITEM	PART No.	TITLE
1	484	FRICITION LINING
2	3245	EH OUTER MEMBER
3	491	DRIVE RING
4	566	MAGNETIC INSULATOR
5	734	CUSHION RING
6	2055	BM INNER ROTOR
7	2056	BM COLLAR
8	2075	BM FIELD SPOOL & BEARING ASSY.
9	3246	EH SLEEVE & BEARING SUB-ASSY.
10	2057	BM TORQUE ARM

CLARK ELECTRIC CLUTCH AND CONTROLS Ltd

28 Victory Park, Trident Close, Medway City Estate, Rochester, Kent, ME2 4ER
Tel.: +44 (0)1634 297408 Fax.: +44 (0)1634 739136 e-mail: sales@clarkelectric.co.uk