

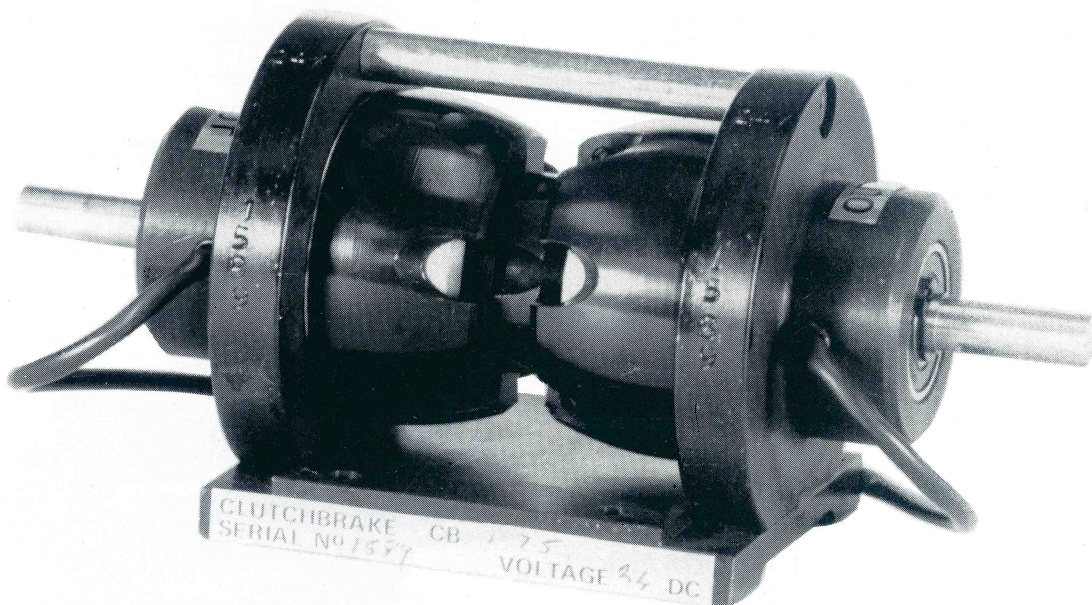
ALL
BRITISH
COMPANY

**COMPOSITE
ELECTROMAGNETIC
CLUTCHBRAKE**

DATA
SHEET

MODEL
CB 175

- TORQUE 1.1 Nm. (10 lb.ins.) MAXIMUM
- UP TO $\frac{1}{8}$ H.P. AT 1440 R.P.M.
- CYCLE RATES CAN EXCEED 10,000 STARTS/STOPS PER HOUR WHERE LOAD INERTIA PERMITS
- FULLY SELF-ADJUSTING NO MAINTENANCE REQUIRED
- CHOICE OF SHAFT DIAMETERS $\frac{5}{16}$ " or 8mm.



The **Clark Composite Clutchbrake** unit is a combination assembly of the well proven **Clark model 175 Clutch and Brake**. Integral **input** and **output** shafts running in substantial sealed bearings reduce fitting to the ultimate in simplicity and low cost.

The Clutch and Brake torque may be fixed at maximum or preset to a reduced value. For exceptionally smooth starting, the **Clark Power Unit type 1024/2R** incorporates an inexpensive "**Silkstart**" electronic control which raises the **clutch** voltage from zero to 24V over a period which can be preset between $\frac{1}{4}$ second and 10 seconds. "**Boost**" circuits can provide very high acceleration and stopping rates i.e. for high cycle rate indexing drives.

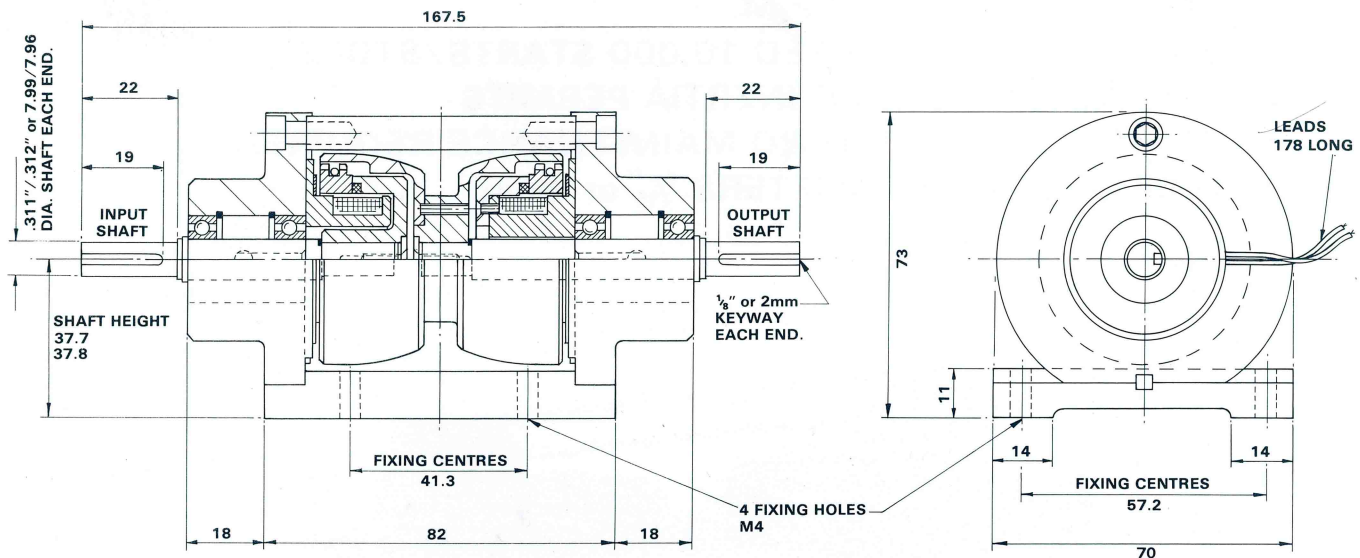
Comprehensive applications advice from address overleaf.

**DATA
SHEET**

**MODEL
CB 175**

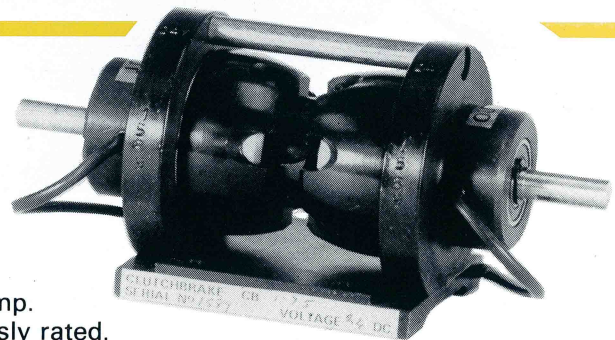
**COMPOSITE
ELECTROMAGNETIC
CLUTCHBRAKE**

ALL
BRITISH
COMPANY



General Specification

Maximum Static Torque	:	1.1 Nm (10 lb. ins.).
Maximum Speed	:	8,000 r.p.m.
Standard Coil Windings	:	24 volts D.C. 0.25 Amp. 97 Ohms. Continuously rated.
Other Voltages available	:	6, 12, 50, 90 Volts D.C.
Weight	:	0.9 Kg (2 lb)
Maximum Heat Dissipation (Slipping)	:	
Input Speed	0-500 r.p.m. :	870 Nm/min (640 ft.lb/min)
	1000 r.p.m. :	1333 Nm/min (980 ft.lb/min)
	1500 r.p.m. :	1500 Nm/min (1100 ft.lb/min)
	3000 r.p.m. :	1800 Nm/min (1325 ft.lb/min)



CLARK ELECTRIC CLUTCH AND CONTROLS Ltd

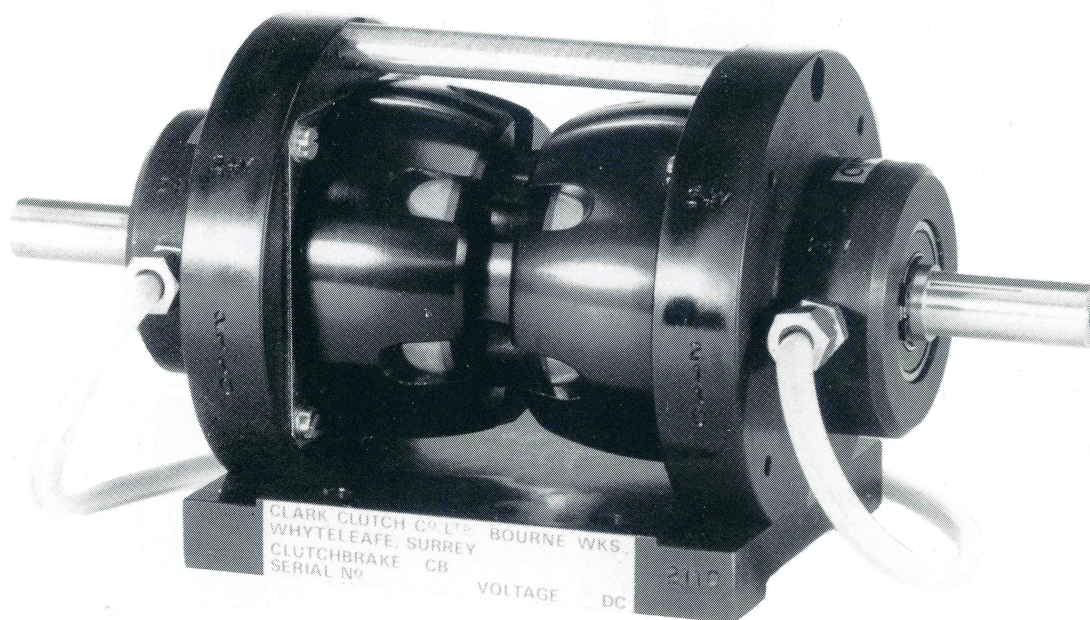
28 Victory Park, Trident Close, Medway City Estate, Rochester, Kent, ME2 4ER
Tel.: +44 (0)1634 297408 Fax.: +44 (0)1634 739136 e-mail: sales@clarkelectric.co.uk

ALL
BRITISH
COMPANY

**COMPOSITE
ELECTROMAGNETIC
CLUTCHBRAKE**

**DATA
SHEET
MODEL
CB 250**

- **TORQUE 5.6 Nm. (50lb.ins.) MAXIMUM.**
- **UP TO 1/2 H.P. AT 1440 R.P.M.**
- **CYCLE RATES CAN EXCEED 10,000 STARTS/STOPS PER HOUR WHERE LOAD INERTIA PERMITS.**
- **FULLY SELF-ADJUSTING NO MAINTENANCE REQUIRED.**
- **CHOICE OF SHAFT DIAMETERS 1/2" or 12mm.**



The **Clark Composite Clutchbrake** unit is a combination assembly of the well proven **Clark** model 250 **Clutch and Brake**. Integral **input** and **output** shafts running in substantial sealed bearings reduce fitting to the ultimate in simplicity and low cost. The unit requires **no maintenance** and is entirely **self-adjusting**.

The Clutch and Brake torque may be fixed at maximum or preset to a reduced value. For exceptionally smooth starting, the **Clark Power Unit type 42SR** incorporates an inexpensive "**Silkstart**" electronic control which raises the **clutch** voltage from zero to 24V over a period which can be preset at between 1/4 second and 10 seconds. "**Boost**" circuits can provide very high acceleration and stopping rates i.e. for high cycle rate indexing drives.

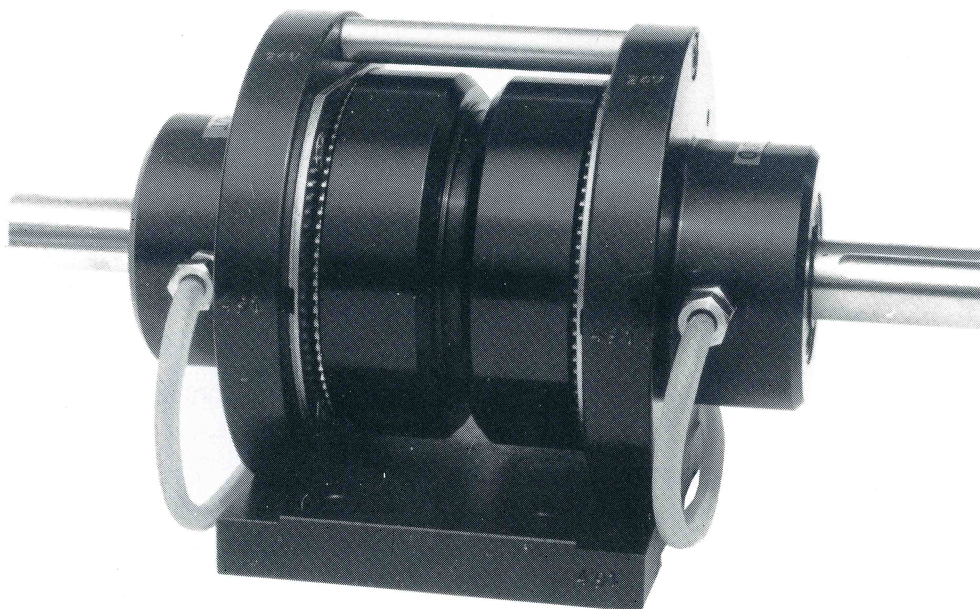
Comprehensive applications advice from address overleaf.

ALL
BRITISH
COMPANY

**COMPOSITE
ELECTROMAGNETIC
CLUTCHBRAKE**

**DATA
SHEET
MODEL
CB 365**

- **TORQUE 11.5 Nm. (100lb.ins.) MAXIMUM.**
- **UP TO 1 H.P. AT 1440 R.P.M.**
- **CYCLE RATES CAN EXCEED 6,000 STARTS/STOPS PER HOUR WHERE LOAD INERTIA PERMITS.**
- **FULLY SELF-ADJUSTING NO MAINTENANCE REQUIRED.**
- **20mm DIAMETER INPUT AND OUTPUT SHAFTS.**



The **Clark Composite Clutchbrake** unit is a combination assembly of the well proven **Clark** model 365 **Clutch and Brake**. Integral **input** and **output** shafts running in substantial sealed bearings reduce fitting to the ultimate in simplicity and low cost. The unit requires **no maintenance** and is entirely **self-adjusting**.

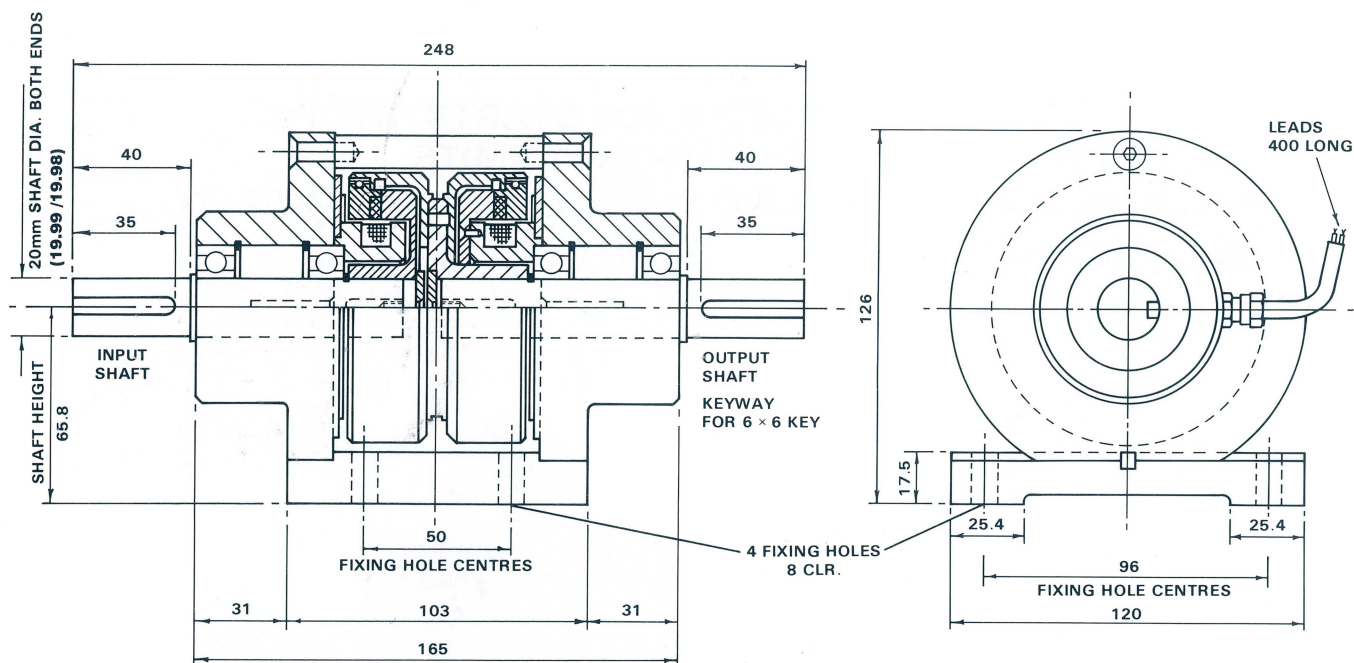
The Clutch and Brake torque may be fixed at maximum or preset to a reduced value. For exceptionally smooth starting, the **Clark Power Unit type 1024/2R** incorporates an inexpensive "**Silkstart**" electronic control which raises the **clutch** voltage from zero to 24V over a period which can be preset at between $\frac{1}{4}$ second and 10 seconds. "**Boost**" circuits can provide very high acceleration and stopping rates i.e. for high cycle rate indexing drives.

Comprehensive applications advice from address overleaf.

**DATA
SHEET
MODEL
CB 365**

**COMPOSITE
ELECTROMAGNETIC
CLUTCHBRAKE**

ALL
BRITISH
COMPANY



General Specification

Maximum Static Torque	:	11.5 Nm (100lb. ins.).
Maximum Speed	:	6250 r.p.m.
Standard Coil Windings	:	24 Volts D.C. 0.63 Amp. 38 Ohms. Continuously rated.
Other Voltages available	:	6, 12, 50, 90 Volts D.C.
Weight	:	4.75 Kg. (10.5lb)
Maximum Heat Dissipation (Slipping)	:	
Input Speed 0-500 r.p.m.	:	1707 Nm/min (1255 ft.lb/min)
1000 r.p.m.	:	2560 Nm/min (1880 ft.lb/min)
1500 r.p.m.	:	3123 Nm/min (2296 ft.lb/min)
3000 r.p.m.	:	4060 Nm/min (2985 ft.lb/min)



CLARK ELECTRIC CLUTCH AND CONTROLS Ltd

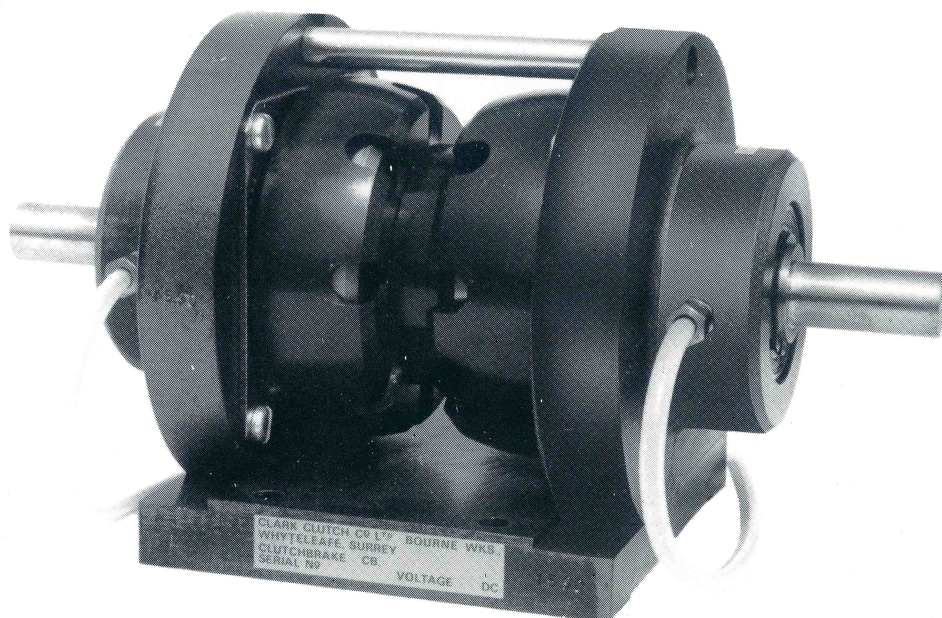
28 Victory Park, Trident Close, Medway City Estate, Rochester, Kent, ME2 4ER
Tel.: +44 (0)1634 297408 Fax.: +44 (0)1634 739136 e-mail: sales@clarkelectric.co.uk

ALL
BRITISH
COMPANY

**COMPOSITE
ELECTROMAGNETIC
CLUTCHBRAKE**

**DATA
SHEET
MODEL
CB 400**

- TORQUE 23 Nm. (200lb.ins.) MAXIMUM.
- UP TO 2 H.P. AT 1440 R.P.M.
- CYCLE RATES CAN EXCEED 3,600 STARTS/STOPS PER HOUR WHERE LOAD INERTIA PERMITS.
- FULLY SELF-ADJUSTING NO MAINTENANCE REQUIRED.
- CHOICE OF SHAFT DIAMETER $\frac{3}{4}$ " OR 20mm.



The **Clark Composite Clutchbrake** unit is a combination assembly of the well proven **Clark** model 400 **Clutch and Brake**. Integral **input** and **output** shafts running in substantial sealed bearings reduce fitting to the ultimate in simplicity and low cost.

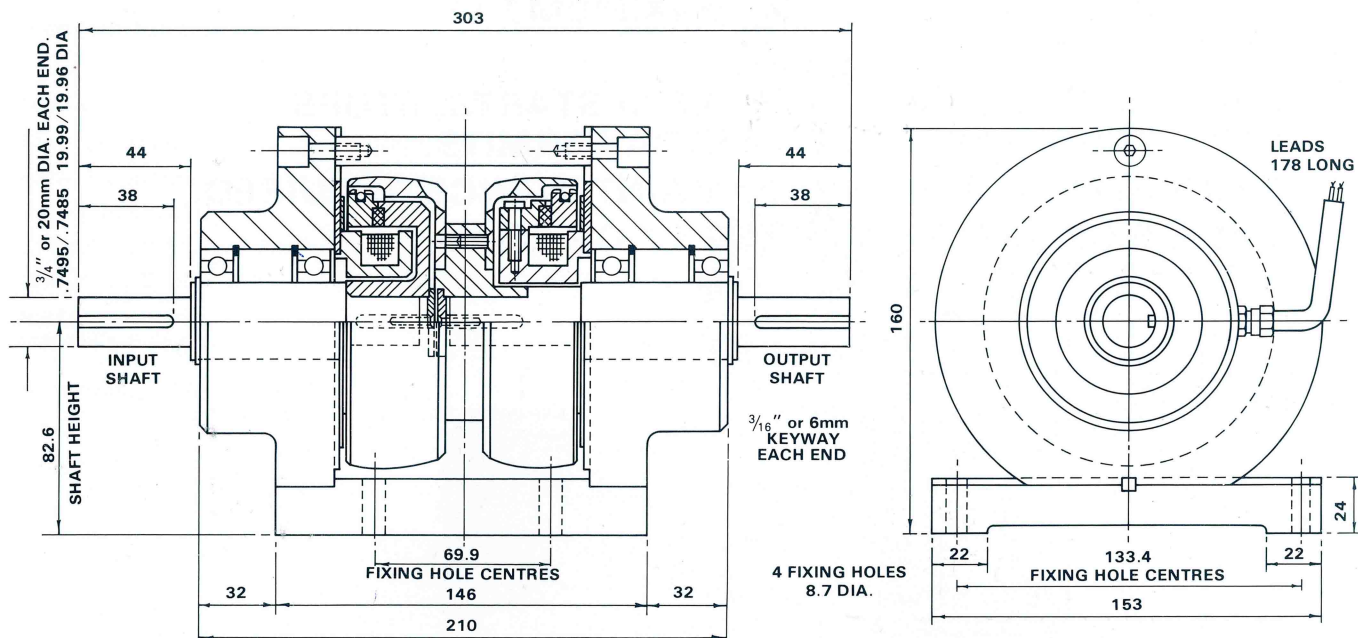
The Clutch and Brake torque may be fixed at maximum or preset to a reduced value. For exceptionally smooth starting, the **Clark Power Unit type 1024/2R** incorporates an inexpensive "**Silkstart**" electronic control which raises the **clutch** voltage from zero to 24V over a period which can be preset at between $\frac{1}{4}$ second and 10 seconds. "**Boost**" circuits can provide very high acceleration and stopping rates i.e. for high cycle rate indexing drives.

Comprehensive applications advice from address overleaf.

**DATA
SHEET
MODEL
CB 400**

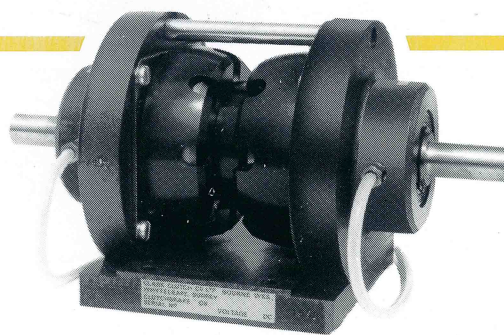
**COMPOSITE
ELECTROMAGNETIC
CLUTCHBRAKE**

ALL
BRITISH
COMPANY



General Specification

Maximum Static Torque	:	23 Nm (200lb. ins.).
Maximum Speed	:	6,250 r.p.m.
Standard Coil Windings	:	24 Volts D.C. 0.7 Amp. 34 Ohms. Continuously rated.
Other Voltages available	:	6, 12, 50, 90 Volts D.C.
Weight	:	10.5 Kg. (23lb)
Maximum Heat Dissipation (Slipping)	:	
Input Speed	0-500 r.p.m. :	2788 Nm/min (2050 ft.lb/min)
	1000 r.p.m. :	4250 Nm/min (3125 ft.lb/min)
	1500 r.p.m. :	5508 Nm/min (4050 ft.lb/min)
	3000 r.p.m. :	7923 Nm/min (5826 ft.lb/min)



CLARK ELECTRIC CLUTCH AND CONTROLS Ltd

28 Victory Park, Trident Close, Medway City Estate, Rochester, Kent, ME2 4ER

Tel.: +44 (0)1634 297408 Fax.: +44 (0)1634 739136 e-mail: sales@clarkelectric.co.uk

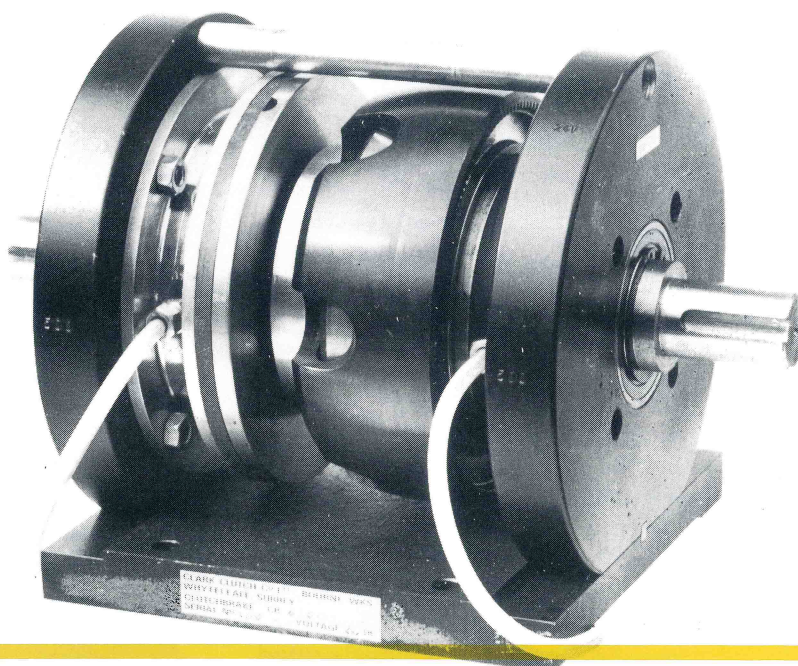
ALL
BRITISH
COMPANY

**COMPOSITE
ELECTROMAGNETIC
CLUTCHBRAKE**

**DATA
SHEET
MODEL
CB 600**

This Clutchbrake unit should be used with a Clark Power Unit type 6824/2 or 6824/2R or equivalent circuit.

- **TORQUE 61 Nm. 45lb.ft. MAXIMUM**
- **UP TO 5 H.P. AT 1440 R.P.M.**
- **CYCLE RATES CAN EXCEED 2000 STARTS/STOPS**
- **PER HOUR WHERE LOAD INERTIA PERMITS**
- **FULLY SELF-ADJUSTING NO MAINTENANCE REQUIRED**
- **CHOICE OF SHAFT DIAMETERS 1" or 28mm.**



The **Clark Composite Clutchbrake** unit is a combination assembly of the well proven **Clark** model 600 **Clutch and Brake**. Integral **input** and **output** shafts running in substantial sealed bearings reduce fitting to the ultimate in simplicity and low cost.

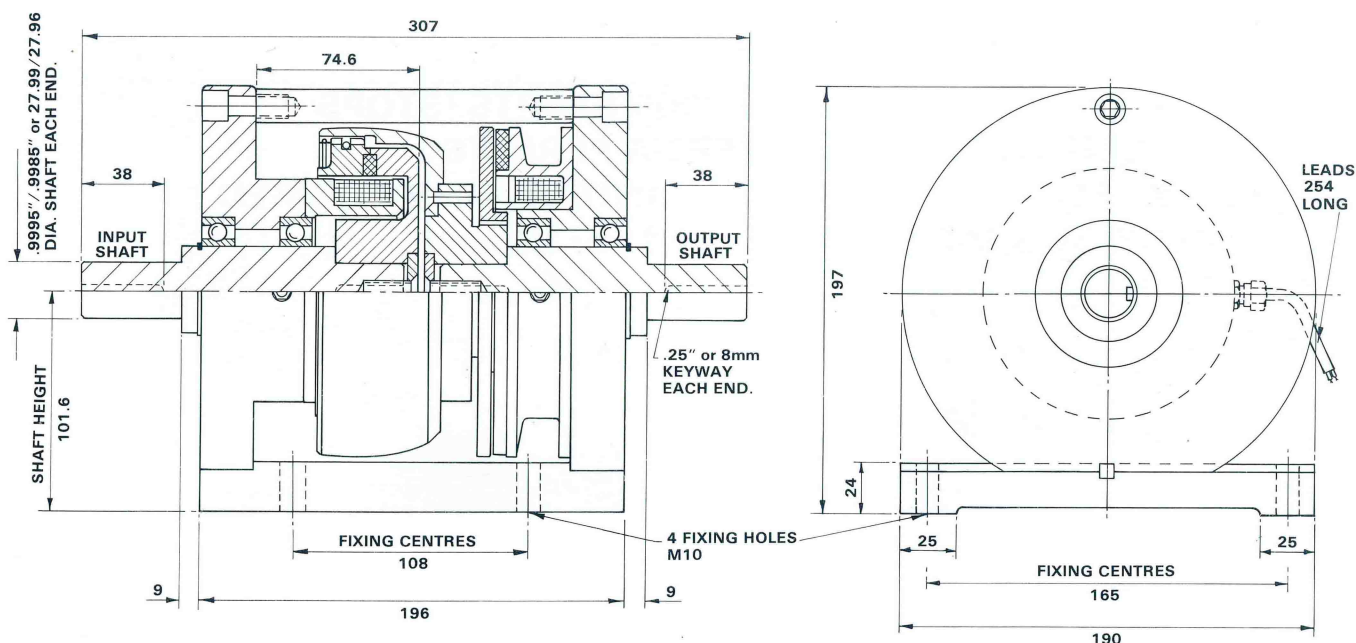
The Clutch and Brake torque may be fixed at maximum or preset to a reduced value. For exceptionally smooth starting, the **Clark Power Unit type 6824/2R** incorporates an inexpensive "**Silkstart**" electronic control which raises the **clutch** voltage from zero to 24V over a period which can be preset between $\frac{1}{4}$ second and 10 seconds. "**Boost**" circuits can provide very high acceleration and stopping rates i.e. for high cycle rate indexing drives.

Comprehensive applications advice from address overleaf.

**DATA
SHEET
MODEL
CB 600**

**COMPOSITE
ELECTROMAGNETIC
CLUTCHBRAKE**

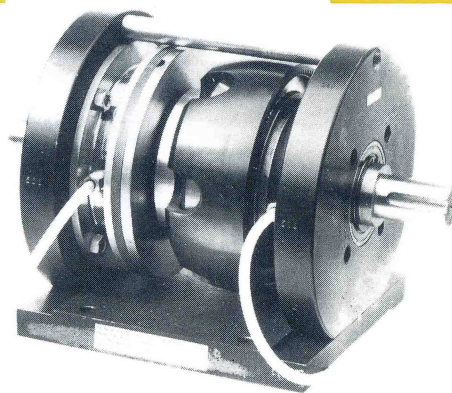
ALL
BRITISH
COMPANY



General Specification

Maximum Static Torque	: 61 Nm (45lb. ft).
Maximum Speed	: 3,000 r.p.m.
Standard Coil Windings	: 24 volts D.C. 0.92 Amp. 26 Ohms. Continuously rated.
Other Voltages available	: 6, 12, 50, 90 Volts D.C.
Weight	: 18.1 Kg (40lb)
Maximum Heat Dissipation (Slipping)	

Input Speed	0-500 r.p.m.	: 11,800 Nm/min (8,700 ft.lb/min)
	1000 r.p.m.	: 18,300 Nm/min (13,450 ft.lb/min)
	1500 r.p.m.	: 23,700 Nm/min (17,400 ft.lb/min)
	3000 r.p.m.	: 39,400 Nm/min (29,000 ft.lb/min)



CLARK ELECTRIC CLUTCH AND CONTROLS Ltd

28 Victory Park, Trident Close, Medway City Estate, Rochester, Kent, ME2 4ER
Tel.: +44 (0)1634 297408 Fax.: +44 (0)1634 739136 e-mail: sales@clarkelectric.co.uk

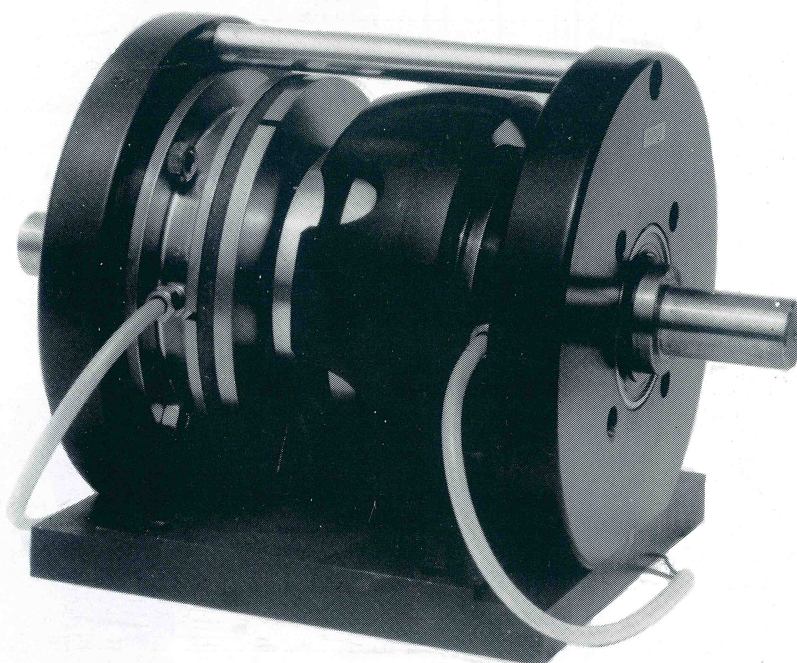
ALL
BRITISH
COMPANY

**COMPOSITE
ELECTROMAGNETIC
CLUTCHBRAKE**

**DATA
SHEET
MODEL
CB 800**

This Clutchbrake unit should be used with a Clark Power Unit type 6824/2 or 6824/2R or equivalent circuit.

- **TORQUE 122 Nm. 90lb.ft. MAXIMUM**
- **UP TO 12 H.P. AT 1440 R.P.M.**
- **CYCLE RATES CAN EXCEED 1500 STARTS/STOPS PER HOUR WHERE LOAD INERTIA PERMITS**
- **FULLY SELF-ADJUSTING NO MAINTENANCE REQUIRED**
- **CHOISE OF SHAFT DIAMETERS 1⁵/₈" or 40 mm**



The **Clark Composite Clutchbrake** unit is a combination assembly of the well proven **Clark** model 800 **Clutch and Brake**. Integral **input** and **output** shafts running in substantial sealed bearings reduce fitting to the ultimate in simplicity and low cost.

The Clutch and Brake torque may be fixed at maximum or preset to a reduced value. For exceptionally smooth starting, the Clark **Power Unit type 6824/2R** incorporates an inexpensive "**Silkstart**" electronic control which raises the **clutch** voltage from zero to 24V over a period which can be preset between 1/4 second and 10 seconds. "**Boost**" circuits can provide very high acceleration and stopping rates i.e. for high cycle rate indexing drives.

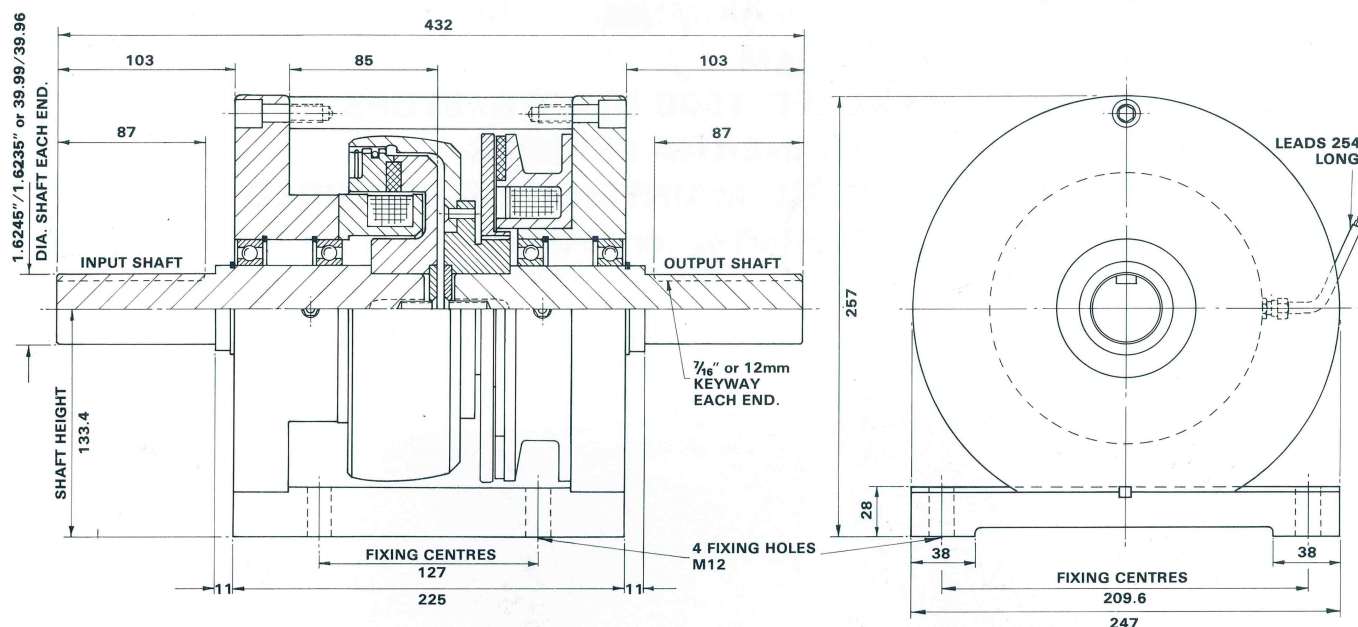
Comprehensive applications advice from address overleaf.

**DATA
SHEET**

**MODEL
CB 800**

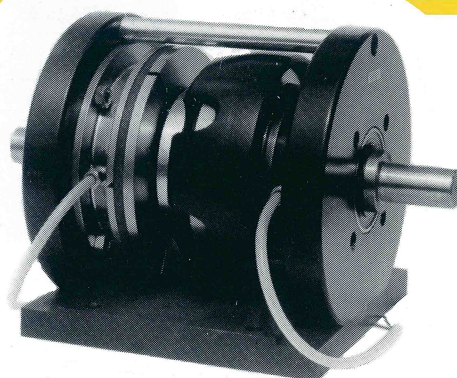
**COMPOSITE
ELECTROMAGNETIC
CLUTCHBRAKE**

ALL
BRITISH
COMPANY



General Specification

Maximum Static Torque	:	122 Nm (90lb. ft).
Maximum Speed	:	3,000 r.p.m.
Standard Coil Windings	:	24 volts D.C. 1.4 Amp. 17.2 Ohms. Continuously rated.
Other Voltages available	:	6, 12, 50, 90 Volts D.C.
Weight	:	33.5 Kg (74lb)
Maximum Heat Dissipation (Slipping)	:	
Input Speed	0-500 r.p.m. :	20,000 Nm/min (14,700 ft.lb/min)
	1000 r.p.m. :	30,600 Nm/min (22,500 ft.lb/min)
	1500 r.p.m. :	41,100 Nm/min (30,200 ft.lb/min)
	3000 r.p.m. :	71,700 Nm/min (52,700 ft.lb/min)



CLARK ELECTRIC CLUTCH AND CONTROLS Ltd

28 Victory Park, Trident Close, Medway City Estate, Rochester, Kent, ME2 4ER
Tel.: +44 (0)1634 297408 Fax.: +44 (0)1634 739136 e-mail: sales@clarkelectric.co.uk